

Hawkesdene



© I Uncharted - Shana Joseph

• *Elegant Mountain Luxury* •

Andrews, North Carolina

•

An Unforgettable Experience

Hawkesdene is a five-star, award-winning, 70-acre mountain estate. It's a one-of-a-kind, 44-bedroom private property tucked into the elegant mountain country of western North Carolina, ready to be the destination wedding site of your dreams. Experience this sprawling location for an extended stay, just you with your people, and nobody else on-site but our personable, professional Hawkesdene service team. Here is where gourmet meals for up to 125 guests, perfectly appointed guest rooms and cottages for as many as 122 guests, and manicured grounds meet the soothing rush of Phillip's Creek, sweeping mountain views, and perfect solitude. A destination like no other. Be prepared for the celebration of a lifetime – an unforgettable experience you and your guests will feel for years to come.

•



The Perfect Reunion-Style Destination Vacation-Wedding



The 70-acre Estate is Yours.

Main House & 14 Guest Houses

Accommodations for up to 122 Guests

Ceremony & Reception for up to 125 Guests

Dining for up to 125 Guests

Unlimited Meals, Snacks & Non-Alcoholic Beverages

Waitstaff & Bartenders

Event Planning & Coordination

Design & Décor

Bridal Salon

Open Air Pavilion on Phillips Creek

Reception Gallery on Colvard Creek

Alpaca Stable

Covered Bridge over Phillips Creek

Fire Pit & Adirondack Chairs

Swing Arbor

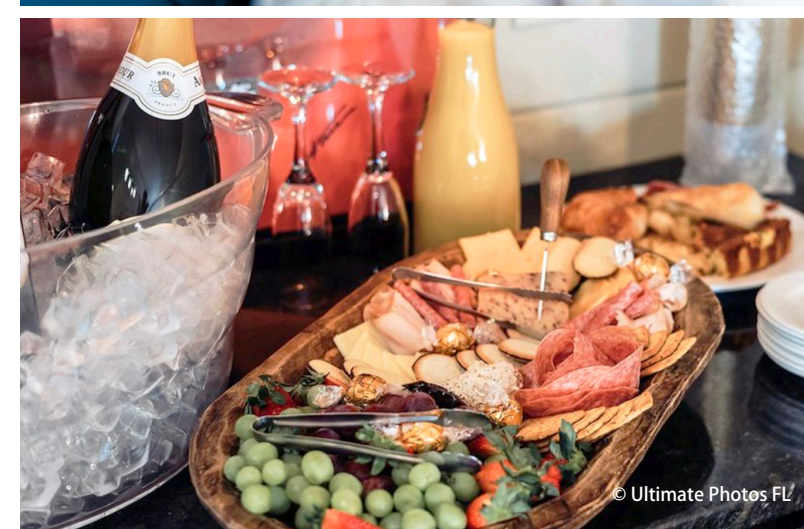
Pergola Garden

National Forrest Hike to Waterfall

Trail Hike to Hawkes Nest

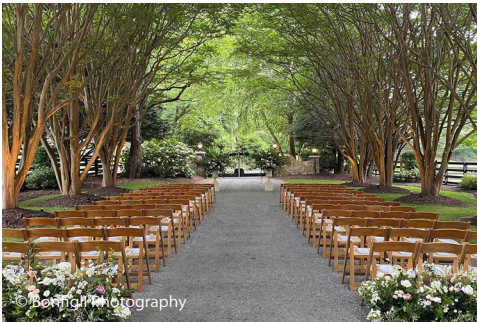
Patio & Lawn Games

Guest Parking



Choice of Ceremony Location

Since the entire estate is yours during your stay you can choose the locating for your ceremony anywhere on the estate that you wish and are able to change the location at the very last minute. Our most popular ceremony locations are listed below.



Canopy of Crape Myrtles

Our 25-year-old Crape Myrtle trees set the mood as a natural canopy and archway to create one of our most popular ceremony locations on the estate.



Pergola Garden

This gorgeous ceremony favorite on the lawn under the clear blue sky with epic mountain views boasts beautifully manicured greenery, stone stairs and a large arbor to welcome you.



Covered Bridge by Phillips Creek

Perfect for a grand entrance, our covered bridge over Phillips Creek captures the soothing sounds of rushing water surrounded by nature.



Alpaca Stable

Exchange vows while the alpacas graze and watch on lovingly. It's a cozy location under a canopy of beautiful weeping willow trees.



The Gallery on Colvard Creek

This new location on the lawn at The Gallery provides an impressive National Forest backdrop of trees and cliffs with the sounds of Colvard Creek flowing in the background.



Choice of Reception Location



Open Air Pavilion & Garden Courtyard

The Open Air Pavilion is a 2,500 square-foot celebration space attached to the Main House and located directly on Phillips Creek that is equipped with custom roll down canvas sides and a commercial heating system that will transform the open air space into a cozy and usable outdoor room during the colder months. The pavilion and adjacent Garden Courtyard surrounded by native colors and lush foliage is the perfect place to celebrate your special day.

The Open Air Pavilion Features

- Outside dining & celebration spaces on Phillips Creek
- Massive stone fireplace with plenty of split wood
- Full kitchen offering elegant buffet dining options
- Premium bar area
- High-end sound system with bluetooth and 55-inch flat screen TV for slideshows
- Dimmable romantic market lights
- DJ & live band space
- Designated WiFi
- ADA-accessible with plenty of guest parking
- Commercial heating system
- Commercial backup generator



The Gallery on Colvard Creek

Celebrate your wedding in enhanced style at our newly constructed 5,000 square-foot reception gallery located on Colvard Creek. This chic building, adorned with the owners' exclusive personal collection of the most exquisite contemporary artwork, assures that inclement weather will never be an issue for your ceremony, cocktail party and reception on your special day.

The Gallery Features

- Inside/outside dining & celebration spaces on Colvard Creek
- Sophisticated interior design & decor
- Contemporary art collection
- Grand 14-to-20-foot ceilings with expansive glass walls opening up to the outside
- Full gourmet kitchen offering buffet or plated dining options
- Indoor and outdoor premium bar areas
- Smart sound & lighting systems
- Dimmable romantic market lights
- DJ & live band space and dance floor
- Designated WiFi for easy connection to internet radio
- ADA-accessible with plenty of guest parking
- Year-round climate-controlled space
- Commercial backup generator



Wedding Reception

Welcome Table

Your personal items are displayed here, including your guest book, party favors, photos and anything that makes you, you.

Beverage Station

Completely stocked full-service bar, professionally staffed, serving beer, wine, champagne, cocktails, soda and juices. It's stocked with all of the necessary garnishes.

Appetizer Station

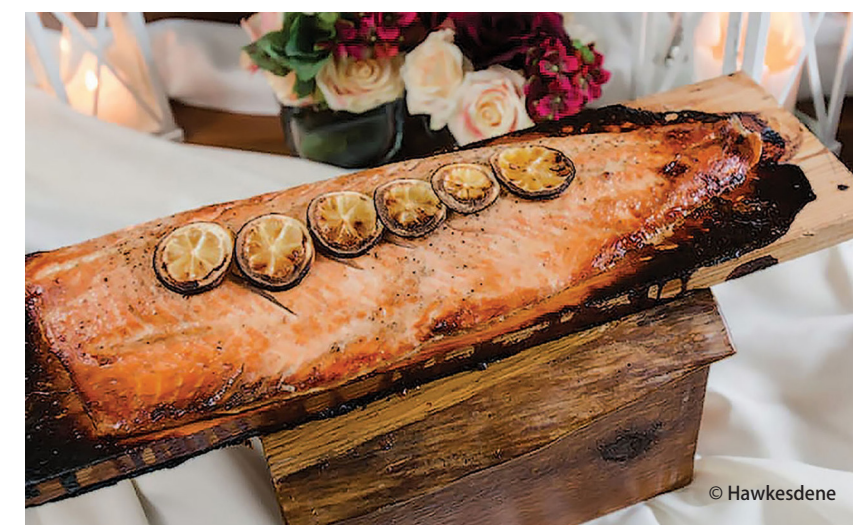
During your 90-minute post-wedding cocktail party, we display our signature grand charcuterie on custom wood display boards. Included are meats, cheeses, veggies, fruits and more.

Grand Buffet Station or Optional Plated Dinner

The dinner style of your choice is either presented elegantly on our impressive, custom-made 4' x 10' wooden table ~ Or plated and served by our exceptional waitstaff.

Cake & Dessert Station

Your wedding cake is set up on our oversized wood cake stand and displayed on one of our custom wood tables with your other selected sweets.



© spirecours (Photospre)

© Hawkesdene

© Maddie K Photography

© Verance Photography

© Flightless Bird Photo & Film



Accommodations

Hawkesdene is a private residential village that includes the Main House, Phillips House, twelve cottages and one studio. Our premium accommodations that range in size from 1 to 7 bedrooms designed to exceed expectations are appointed in the same luxury manner so that the invited guests are comfortable no matter where they are staying. The houses and cottages have been strategically placed on property with privacy in mind and are just a short stroll apart so guests can visit, dine and play together while here to celebrate your very special union.

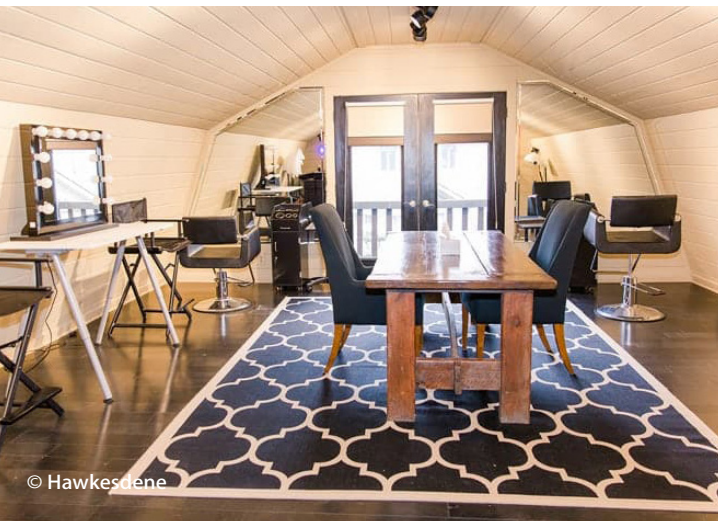
- 15 Individual Houses Ranging in Size from 1 Bedroom to 7 Bedrooms
- 44 Private Bedrooms to Accommodate 88 to 122 Guests
- Elegantly Appointed Guest Rooms and Cottages
- Premium Linens
- Queen & King Size Beds
- Fully-Equipped Kitchens
- Inside & Outside Dining Areas
- Washers & Dryers
- Gas & Wood Burning Fireplaces
- Smart TVs
- Satellite and Cable TV
- Complimentary Wi-Fi
- Private Label Bottled Water
- Coffee Makers and & Fixins
- Alarm Clocks
- Hairdryers
- Molton Brown Collection of Eco-Friendly Hair, Bath and Body Products
- Full Length Mirrors
- Irons & Ironing Boards
- Professional Clothes Steamers
- Pack-n-Plays & Booster Seats
- Daily Housekeeping
- Central Heat & Air
- ADA Accessible
- Pet Friendly (Cottages Only)
- Commercial Backup Generators



Wedding Fee

The Wedding Fee encompasses everything that we do here at Hawkesdene that is wedding related, including wedding coordination and planning from the moment you confirm your special day. We're here for you. The cost of the Wedding Fee is typically covered by the wedding couple.

- Complete wedding planning and coordination services including 'day of' coordination so you do not have to hire a wedding planner.
- Unlimited correspondence and a complimentary overnight stay once confirmed to plan your wedding & extended stay.
- We'll provide you with our Preferred Vendors list to select those outside vendors you'll need for your big day.
- Extensive amount of wedding décor items available and included. All you are required to bring are your personal touches.
- Choice of ceremony site anywhere on the estate that you wish.
- Includes the planning, management, furniture, equipment, production, service, set-up and break-down of your rehearsal, ceremony and reception.
- Use of The Gallery, our temperature-controlled reception space for your 90-minute post wedding cocktail party and reception.
- Use of our full-service bridal salon.
- Large game room located in the Main House including pool and ping pong tables, card tables, wet bar, 70" flat screen TV with satellite for the groom and his party.
- Driver and 4-passenger Kabota RTV on your wedding day to take you and your photographers to the top of our mountain (aka the Hawkes Nest) for stunning sunset and mountain photos.
- Commercial backup generator with the ability to power entire event spaces in case of a power outage.
- Onsite parking area including signage.

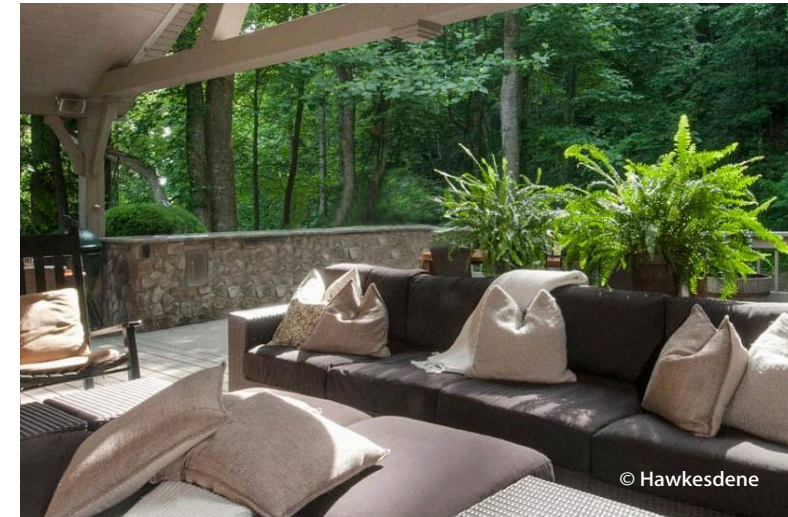




Estate Rental

Estate Rental includes private use of the entire estate and grounds, plus premium accommodations in the Main House, Guest Cottages, and Studio. Lodging sits amongst a lush backdrop of mountains and trees, beautifully manicured gardens, the sparkling waters of Phillips Creek and Colvard Creek.

- Exclusive use of the 70-acre private estate for the duration of your stay.
- Elegant onsite accommodations with 30 to 44 private bedrooms to accommodate 60 to 88 guests comfortably, at two per bed, complete with resort quality furniture and premium bedding & amenities.
- Idyllic grounds, gardens, and rushing creeks with miles of groomed and marked hiking trails into the Nantahala National Forest and to the top of our mountain, which offers stunning sunset and mountain views.
- Massive wood-burning firepit situated along Phillips Creek with Adirondack chairs, plenty of split wood & complimentary fireside s'mores.
- Alpaca stable with our own herd of resident alpacas.
- Open air pavilion situated above the rushing waters of Phillips Creek complete with custom wood tables, chairs, lounge furniture, a massive wood-burning fireplace, TV & sound system, bar, back kitchen & smokehouse. The pavilion can be easily buttoned up and heated whenever necessary.
- Two sets of cornhole, horseshoe courts, a giant Jenga, pool and ping pong tables, cards tables and games.



Dining

Savor the flavors of Southern Appalachia artfully prepared by our renowned culinary team. Our menu highlights locally grown, seasonal ingredients. Everything is prepared from scratch onsite using the freshest, natural products. We're always able to accommodate special requests and individual dietary restrictions.

Enjoy meals tastefully presented buffet-style in the main house dining area or outside under our open-air pavilion. We also offer a plated reception meal in The Gallery. Our culinary team will personally guide you to create a spectacular dining experience.



- Includes all meals beginning with a cocktail party and welcome supper on arrival day through a farewell breakfast on departure day
- Includes an unlimited supply of sweet & salty snacks, fresh fruit, non-alcoholic beverages, bar supplies including ice, mixers and garnishes
- Talented in-house culinary team featuring fresh & creative farm-to-table menus or choose from our themed a-la-carte menus
- Option for plated or buffet-style reception menu
- Professional & courteous uniformed bartenders and wait staff
- Permission to bring your own alcoholic beverages with no corkage fees
- Keg coolers & taps included; kegs can be ordered and delivered from our local breweries and tapped for you and your guests to enjoy
- Customized signature cocktails created on site; just bring us your favorite recipes and spirits
- White bone china dinnerware, elegant stemware & glassware, and heavy gauge stainless steel flatware





2025-2026 Pricing

30 to 44 Private Bedrooms • Accommodations for 60-122 guests • Dining for up to 125 Guests.

2-NIGHT WEEKEND

Any consecutive stay that includes a Friday and/or Saturday

Peak Season – April to November

Wedding Fee \$14,995 *(Paid by the wedding couple)*

Estate Rental 30 bedrooms, Accommodates 60-82 Guests, \$22,995 *(Paid by the onsite guests)*

Dining \$85 per guest per night *(Paid by the wedding couple and onsite guests)*

Off-Peak Season – December to March

Wedding Fee \$10,995 *(Paid by the wedding couple)*

Estate Rental 30 bedrooms, Accommodates 60-82 Guests, \$18,995 *(Paid by the onsite guests)*

Dining \$75 per guest per night *(Paid by the wedding couple and onsite guests)*

2-NIGHT WEEKDAY

Any consecutive stay from Sunday to Thursday

Peak Season & Off-Peak Season

Wedding Fee \$10,995 *(Paid by the wedding couple)*

Estate Rental 30 bedrooms, Accommodates 60-82 Guests, \$18,995 *(Paid by the onsite guests)*

Dining \$75 per guest per night *(Paid by the wedding couple and onsite guests)*

ADD ON ACCOMMODATIONS & ESTATE RENTAL

Peak Season & Off-Peak Season

Additional Nights Estate Rental 30 bedrooms, \$995 per night

Additional Accommodations Four houses with a combined 14 private bedrooms that will accommodate another 28 to 40 guests. These houses can be rented individually. There is a 2-night minimum stay.

Hawkesview Cottage One 3 Bedrooms, Accommodates 6 to 10 Guests, \$495 per night

Hawkesview Cottage Two 2 Bedrooms, Accommodates 4 to 6 Guests, \$395 per night

Blackberry Cottage 4 Bedrooms, Accommodates 8 to 10 Guests, \$595 per night

Phillips House 5 Bedrooms, Accommodates 10 to 14 Guests, \$795 per night

A 50% non-refundable Wedding Fee deposit is required to confirm your wedding and secure your preferred dates and current rates, with the balance required one year prior to your arrival. You're welcome to submit a \$1,000 refundable good faith deposit prior to confirming to hold your preferred dates pending a site visit and your decision. This deposit will apply to the Wedding Fee deposit required to confirm.

There is no tax applied to the wedding fee
• 7% NC Sales Tax and 4% lodging tax apply to estate rental • 18% Service Charge will apply to dining • Children 10 and under and vendor meals are priced at 50% off.

Hawkesdene

For additional questions or to
receive a personalized quote, reach
out to Rob Scheiwiller, Proprietor



381 Phillips Creek Rd.
Andrews, NC 28901
rob@hawkesdene.com
(828) 321-6027

www.hawkesdene.com

Please inquire for more information by clicking:

WEDDING INQUIRY

Click to Follow Us

